



DESPATCH BAY

www.despatchbay.com



PDF LABELS WEB SERVICE

Contents

Introduction	2
Change Log	3
Requesting Labels	4
Getting The Right Labels	4
Dealing With Errors	4
Example Workflow	5
Label Formats	6
1A4 - One Label per A4 Sheet	6
2A4 - Two Labels per A4 Sheet	7
1A6 - A6 Format Labels	8
Storing and Printing Labels	9

Introduction

For our larger volume business clients wanting to fully integrate their internal IT systems into Despatch Bay we offer a PDF Label Web Service. This is designed to work in conjunction with our SOAP Shipping API to enable the downloading of PDF labels for each of your shipments. The Web Service will serve label PDFs for any of your shipments and automatically deals with charging when printing queued labels. When the labels for a queued shipment are requested your account is automatically debited. If the same labels are requested a second time no transaction will occur

Change Log

Version 1.0.1 - 23rd August 2013

Web service location has changed to <https://api.despatchbaypro.com/pdf/1.0.1/labels>

Version 1.0.1

Added support for fetching labels by order reference (*oid*)

Version 1.0.0

Initial Release

Requesting Labels

The web service is located at <https://api.despatchbaypro.com/pdf/1.0.1/labels>

To request a label it is necessary to pass the following variables via either an HTTP GET or POST

- *sid* - TheShipmentID(recommended)
- *oid* - Your own Order Reference (optionally in place of ShipmentID).
- *format* - The required label format. 1A6, 1A4, 2A4 or OPS02. See Label Formats
- *apiuser* - Your API user credential (same value as used for SOAP access)
- *apikey* - Your API key credential (same value as used for SOAP access)

An example GET request might look like this:

```
https://api.despatchbaypro.com/pdf/1.0.1/labels?  
sid=99999&format=1A6&apiuser=12356789&apikey=987654321
```

Getting the right labels

As detailed above, there are two ways to retrieve labels. The recommended approach is to store the Despatch Bay ShipmentIDs in your application and request your labels based on these. Despatch Bay enforces no uniqueness on your own order references so these should be used with caution. If you queue two shipments with the same order reference the PDF Labels Web Service will return the labels for both shipments in one PDF file.

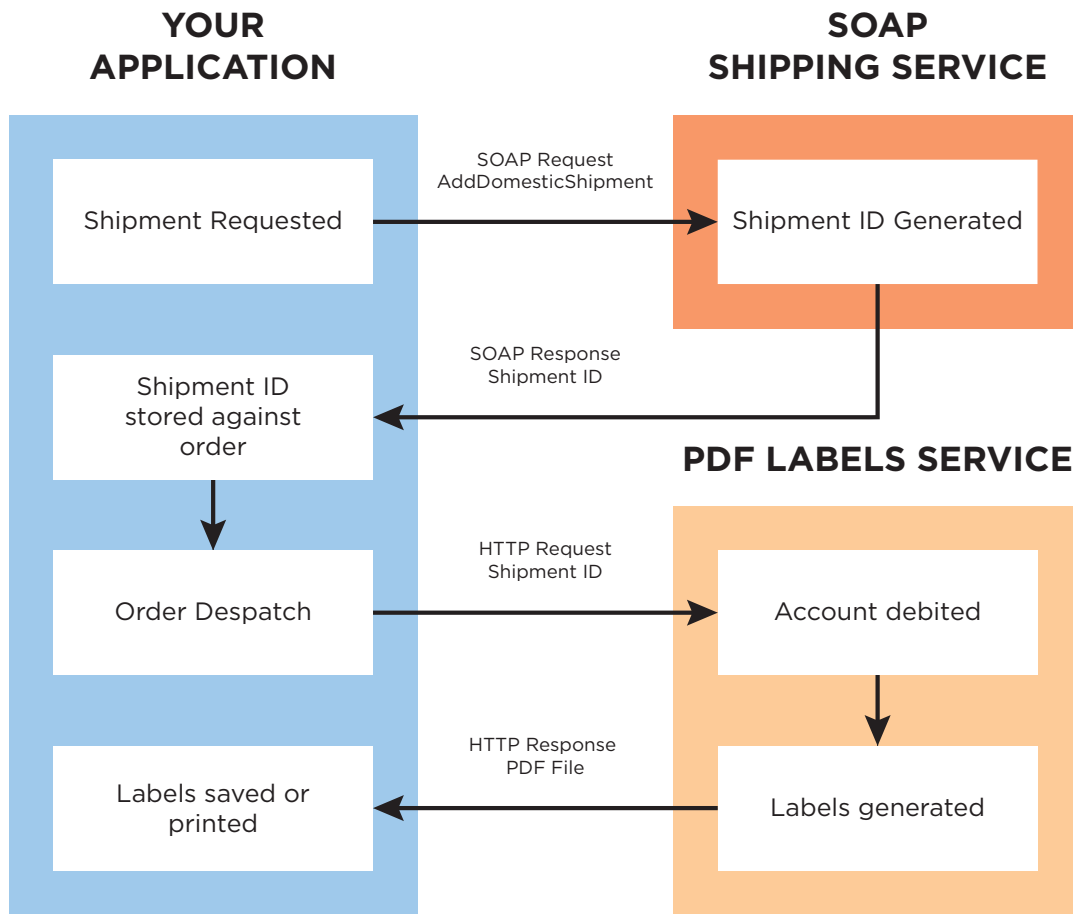
Dealing With Errors

When a request succeeds, the service will respond with an HTTP status code of 200 (OK) and a PDF file ready for printing. There are several cases in which the service will not return a PDF and these are described below. Each status is identifiable by the HTTP status code returned.

- **400 Bad Request**
The service was unable to understand the request.
- **401 Unauthorised Request**
Your API credentials were not valid
- **402 Payment Required**
Your Despatch Bay account has insufficient credit to print labels for this shipment
- **404 Not Found**
The requested shipment was not found

Example Workflow

Below is an example workflow describing how you might go about combining the SOAP Shipping Service with the PDF Labels Service.



Label Formats

There are several available label formats. You should specify one of these formats as the value of the *format* variable in your HTTP request.

1A4 - One Label per A4 Sheet

Produces one landscape A4 page per label



2A4 - Two Labels per A4 Sheet

Produces one landscape A4 page for every two labels

DHL PRIORITY
DHL PRIORITY 10:00
From: SALETRACK PARCELS 67382
19 BRIDGEGATE
RETFORD
NOTTINGHAMSHIRE
DN22 6AJ

DHL EXPRESS
db Despatch Bay.com

To: MR DAVID LISTER
2 BRIDGEGATE CENTRE
BRIDGEGATE
RETFORD
NOTTINGHAMSHIRE
DN22 6AJ

Tel: 01234 567890

Handing **DIA** Day 2

Shipment Number : Date : 2009/12/10
Customer Reference : 1337 1 of 2
Sender Reference : 101788-93709

LINCOLN HAMS HALL

2LG8DN226AJ+80002010

(J)JD00 022 673 8289 8879

DHL PRIORITY
DHL PRIORITY 10:00
From: SALETRACK PARCELS 67382
19 BRIDGEGATE
RETFORD
NOTTINGHAMSHIRE
DN22 6AJ

DHL EXPRESS
db Despatch Bay.com

To: MR DAVID LISTER
2 BRIDGEGATE CENTRE
BRIDGEGATE
RETFORD
NOTTINGHAMSHIRE
DN22 6AJ

Tel: 01234 567890

Handing **DIA** Day 2

Shipment Number : Date : 2009/12/10
Customer Reference : 1337 2 of 2
Sender Reference : 101788-93709

LINCOLN HAMS HALL

2LG8DN226AJ+80002010

(J)JD00 022 673 8289 8880

1A6 - A6 Format Labels

Designed for use where printing onto A6 media is available. Thermal labels printers for example. Produces one portrait A6 page per label.

DHL PRIORITY DHL PRIORITY 10:00		
From: SALETRACK PARCELS 19 BRIDGEGATE RETFORD NOTTINGHAMSHIRE DN22 6AJ	67382	
To: MR DAVID LISTER 2 BRIDGEGATE CENTRE BRIDGEGATE RETFORD NOTTINGHAMSHIRE DN22 6AJ		
	Tel: 01234 567890	
Handling DIA	Day	Time 2
Shipment Number : Customer Reference : 1337 Sender Reference : 101788-93709	Date : 2009/12/10	1 of 2
LINCOLN	HAMS HALL	
		
2LGBDN226AJ+80002010		
		
(J)JD00 022 673 8289 6879		

Storing and Printing Labels

The labels generated by Despatch Bay are approved DHL shipping labels and should not be modified in any way. Care should be taken to ensure that labels are printed at 100% scale. This is especially true when printing on non A6 media.

Each printed label should be A6 size (105 x 148mm).

Any deviation from these dimension may cause scanning errors causing your shipments to be delayed or misrouted.

It is acceptable to store generated labels for future use but care should be taken so that no label is accidentally used more than once. Once a label has been printed and used it should be removed from your system. If duplicate labels were to reach a DHL sorting depot then your account would be subject to manual handling penalties.